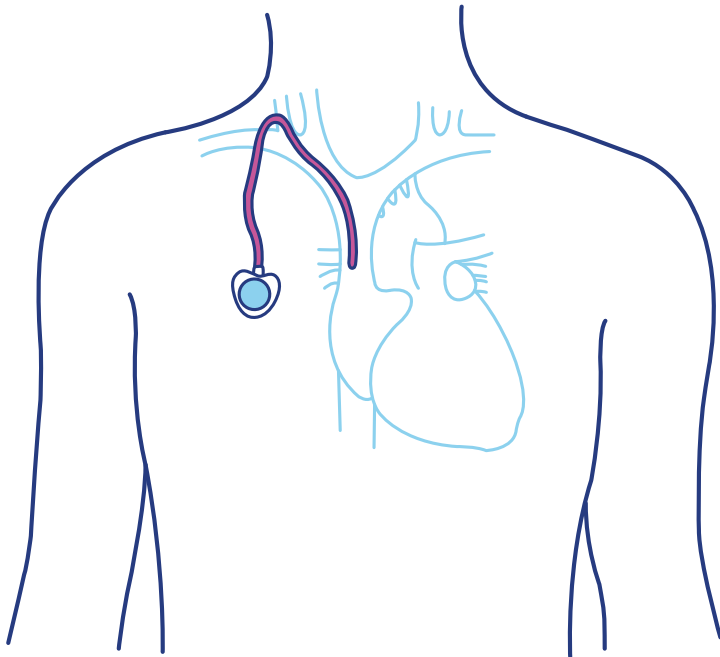


# Port Preparation

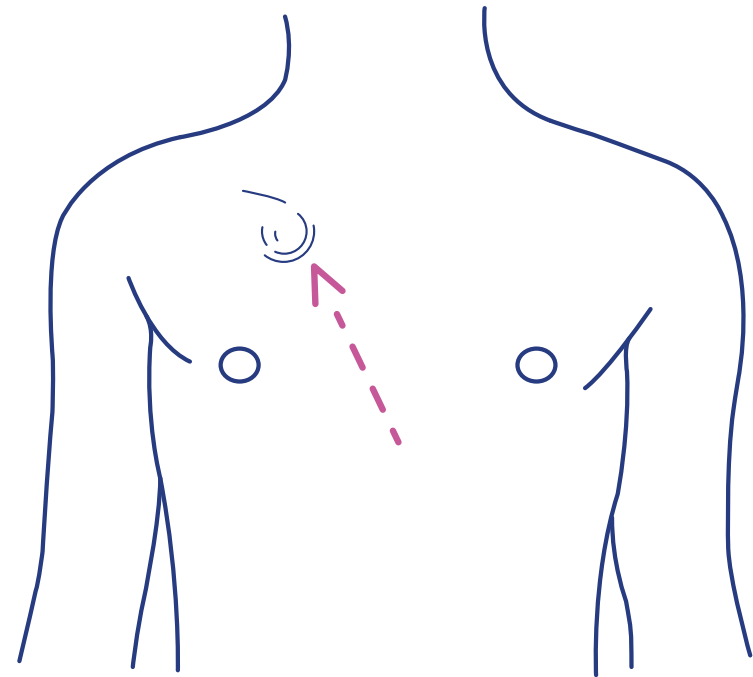
# Your new port-a-cath

Some kids need to get something called a port while they are at the hospital. Nurses use your port to give you medicine to help your body feel better. You will go home with your port. Your port will stay in until the doctors decide it's time for it come out.

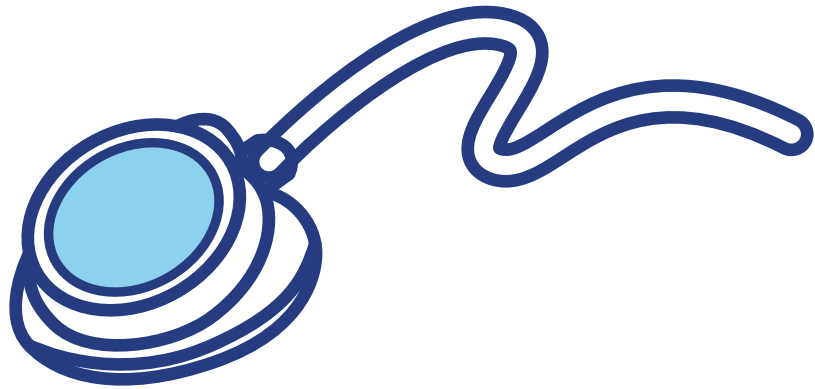
Your port is like a button with a soft squishy center that sits under the skin on your chest. Attached to the button is a long tube that goes inside a vein near your heart.



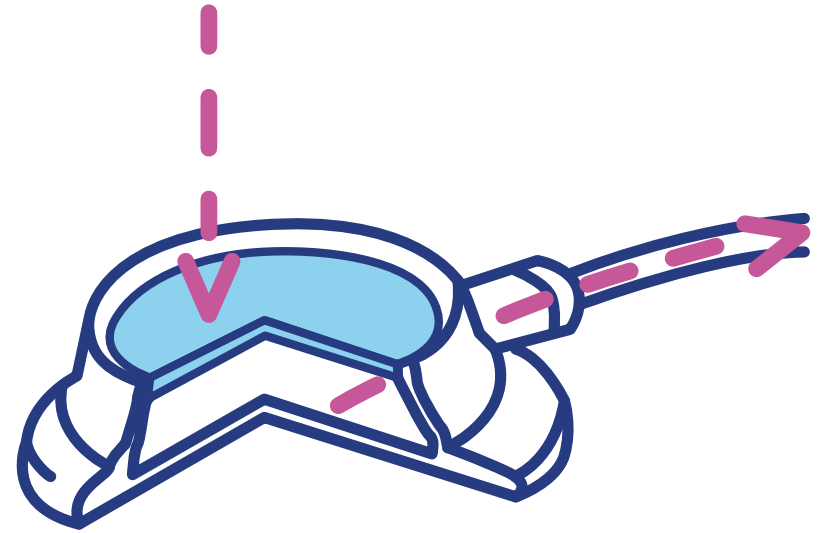
This is what your port looks like inside your chest.



This is what your port looks on the outside.



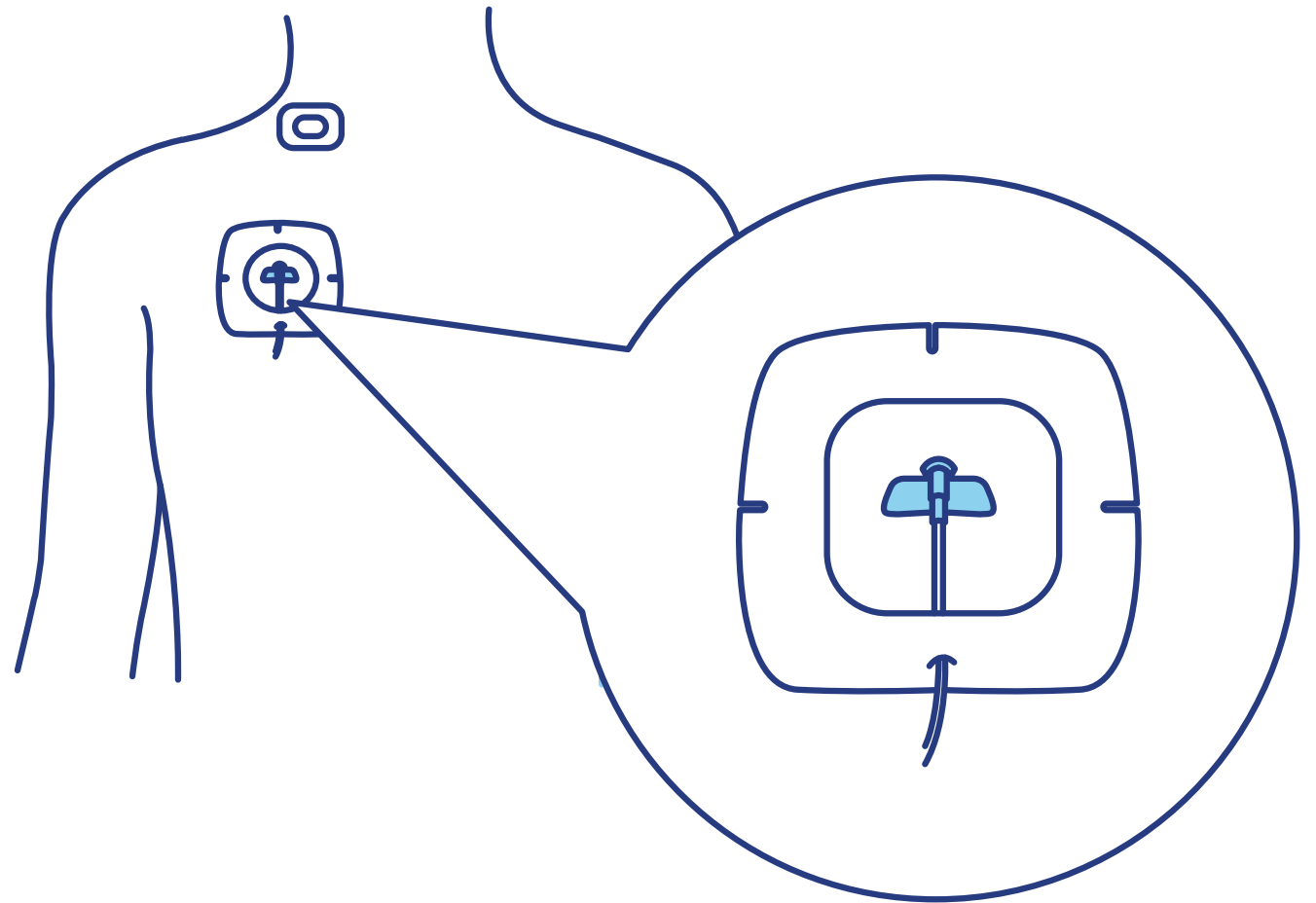
This is a picture of the squishy center of the port.

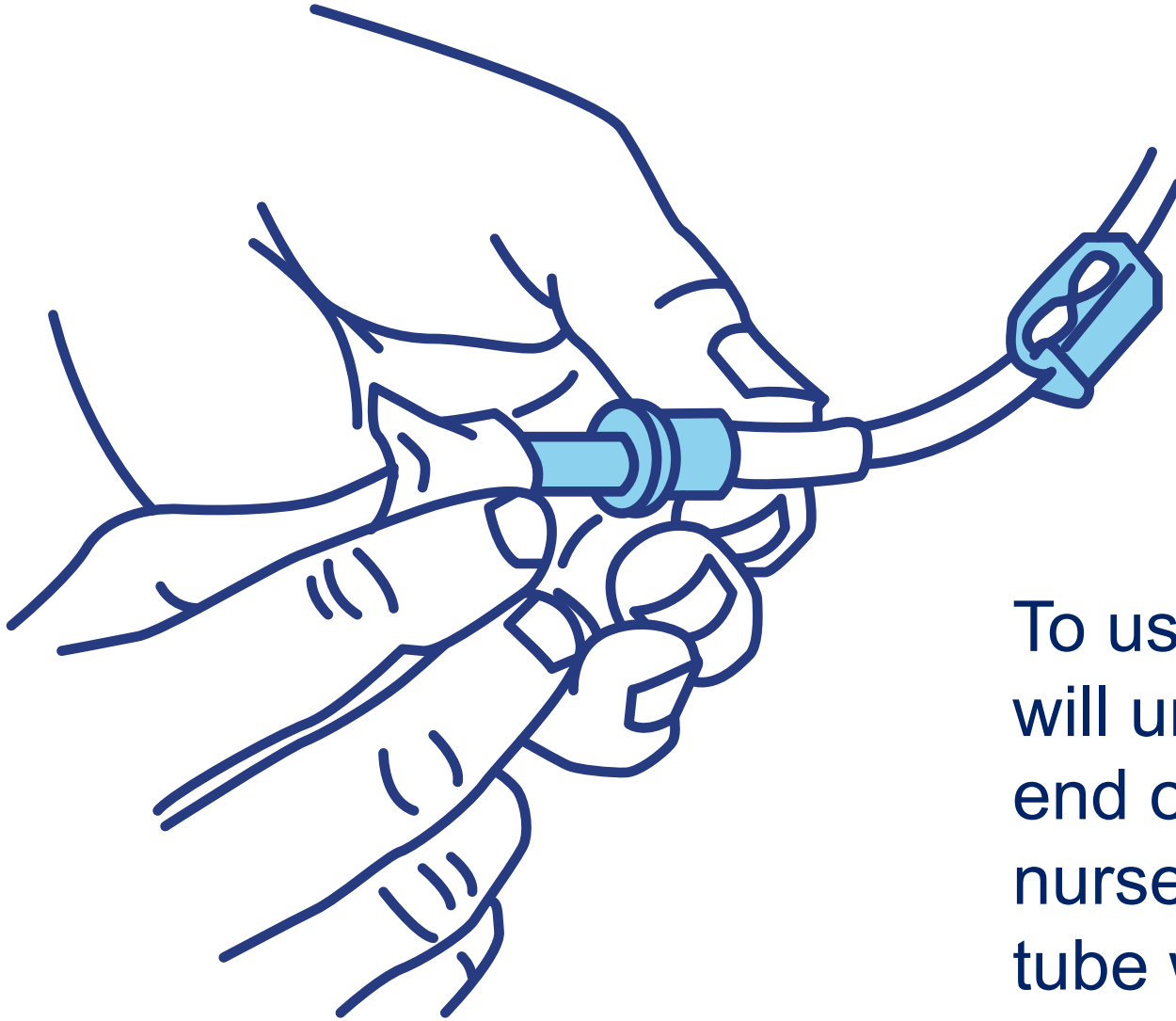


Medicine goes into this part and travels down the tube.

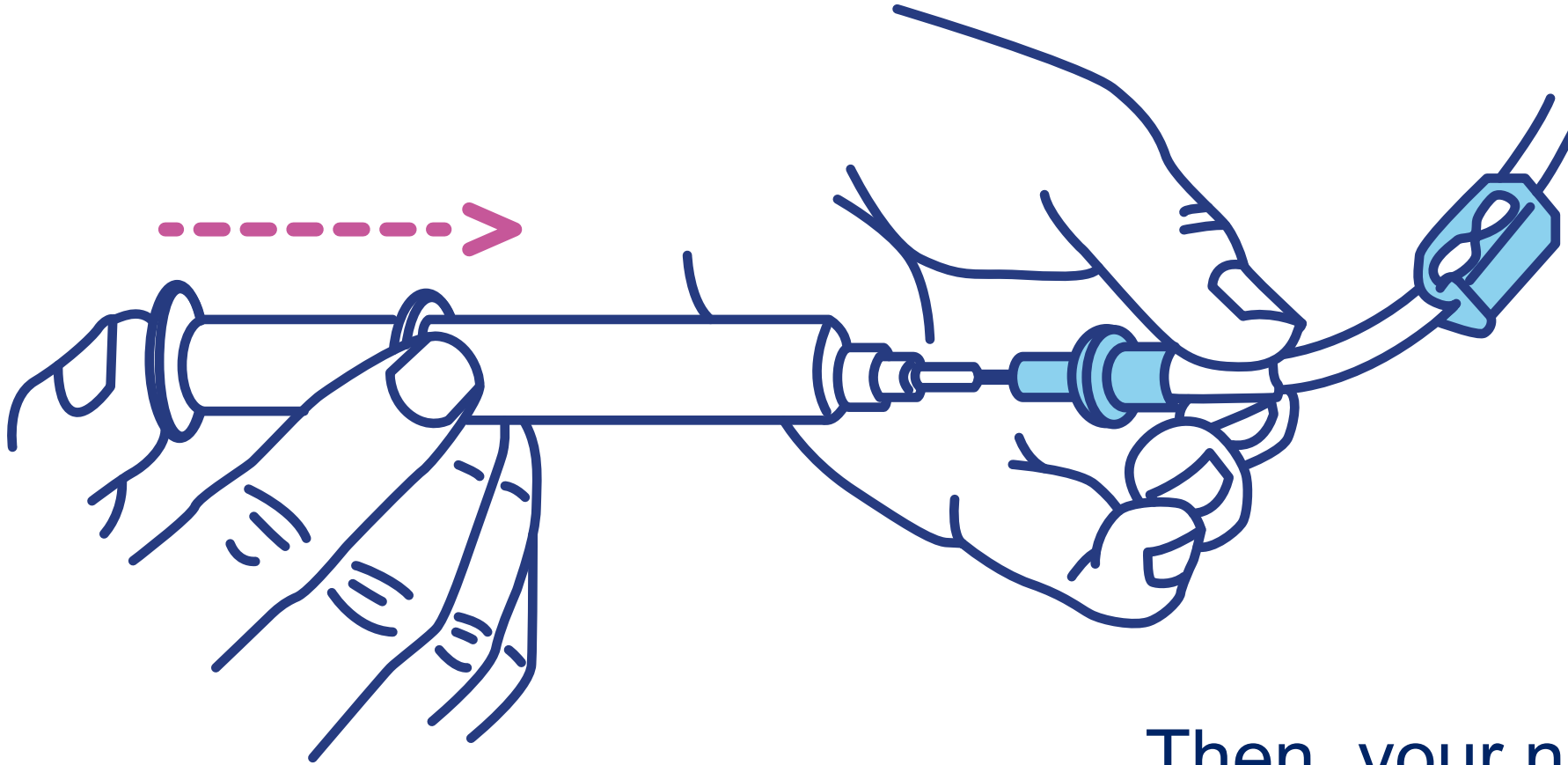
You will be asleep when you get your port.

When you wake up you may see 2 bandages on your chest. One covers a small cut that will heal in a few days. The other bandage is keeping your new port safe from germs.

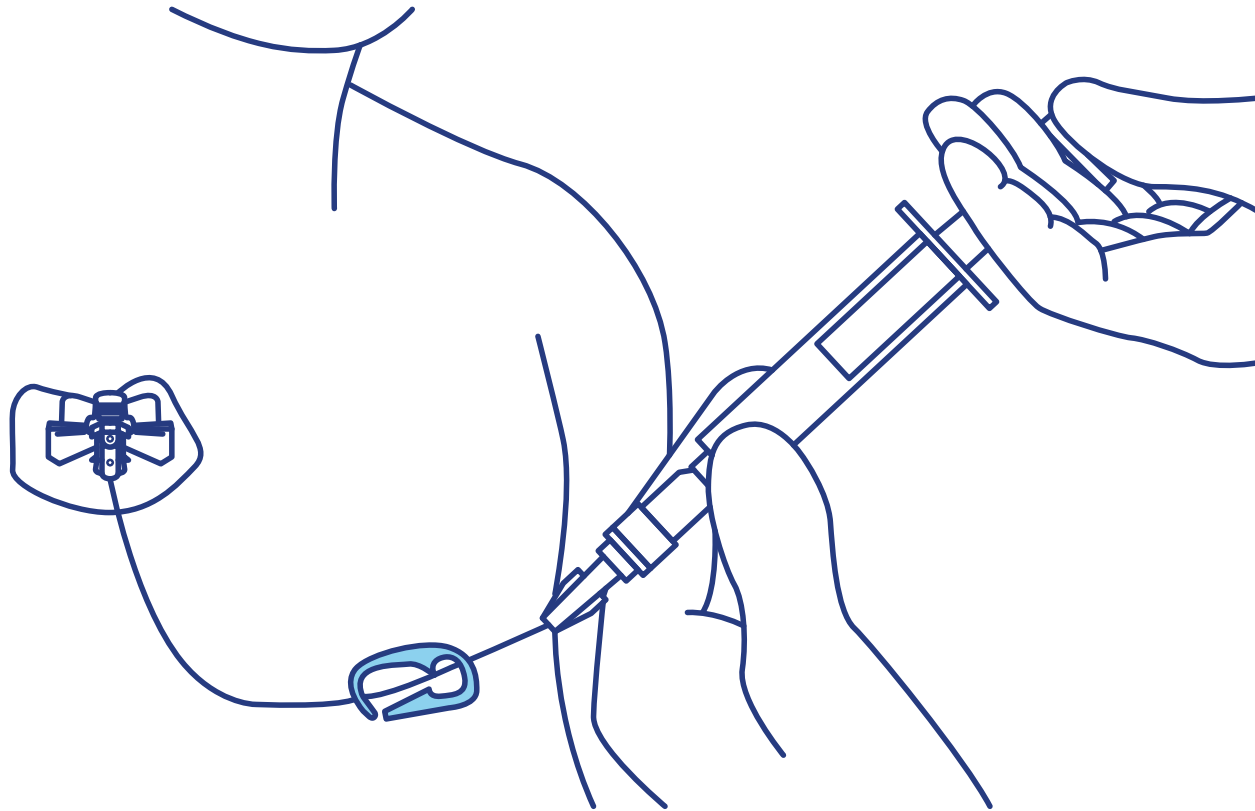




To use your port, your nurse will unscrew a small cap on the end of your tube. Next, your nurse will clean the end of the tube with a small wet cloth.



Then, your nurse will attach a syringe.



This a picture of a nurse giving medicine through the small tube connected to your port. The syringe doesn't have a needle or anything sharp.

Sometimes the syringe will have medicine and sometimes the syringe will have special water called a flush to clean your tube.

Your nurse can also use the syringe to take a small amount of blood from your port for doctors to look at under the microscope.

You can ask your nurse what she is doing with your port!

There will be times when you are connected to a machine called an IV pole from your port.

This machine gives you medicine to help you feel better. This machine does not hurt, but sometimes it makes loud beeps!

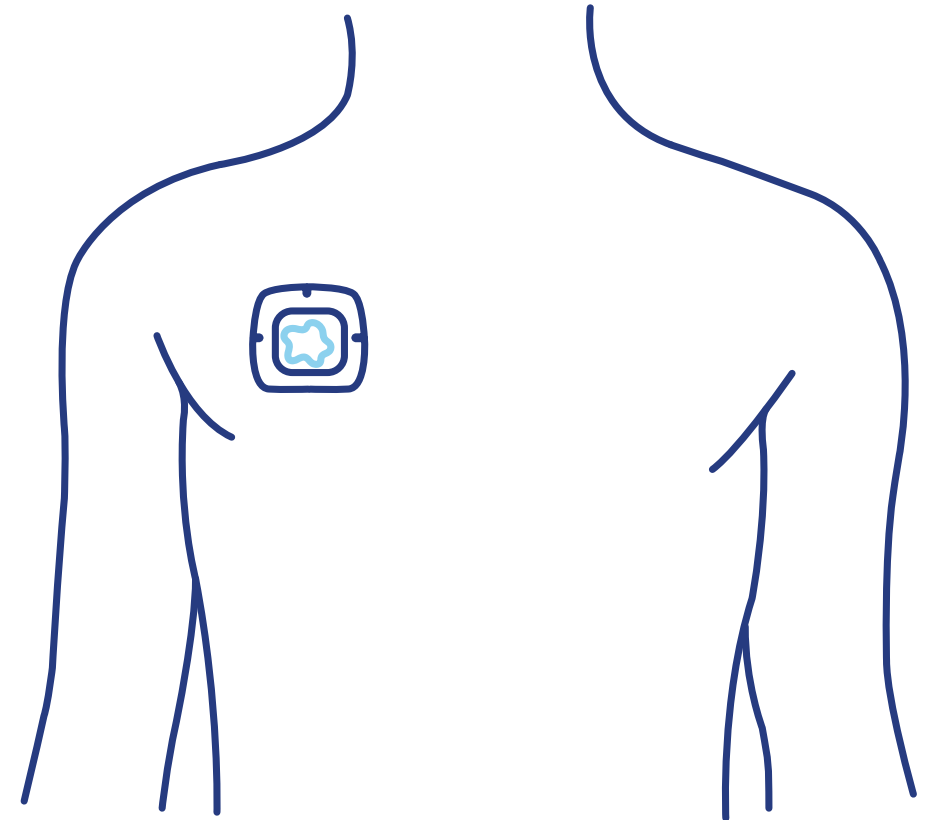
You can still play, walk, sleep and have fun when you are connected to the IV pole.



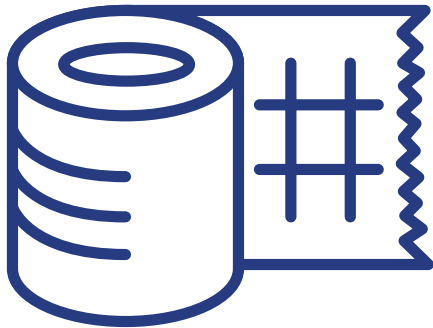
Sometimes you will need a new tube attached to your port. This is called accessing your port.

First, the nurse will put white cream on the outside of your port. This cream helps you not feel that area of your skin. This is called numbing cream or emla. The nurse will put a small clear sticker on top of the cream.

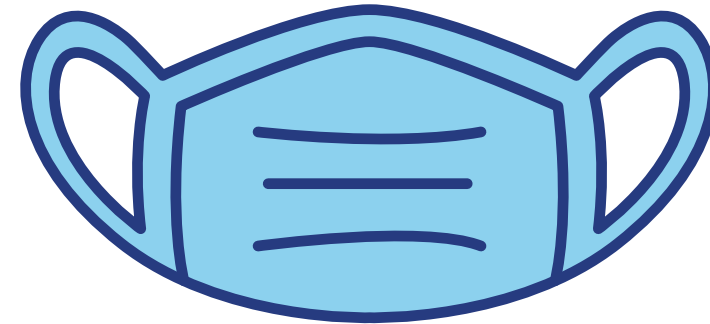
Next, you will wait for the numbing cream to start to work. You can choose what you want to do while you wait!



Once the cream is working, the nurse will take off your clear sticker.  
You can ask your nurse if you can help take it off yourself.



Next, your nurse will wipe the cream off with a small soft cloth. This cloth is called gauze.



Now, everyone will need to make sure they have a mask on to keep germs away from your port.



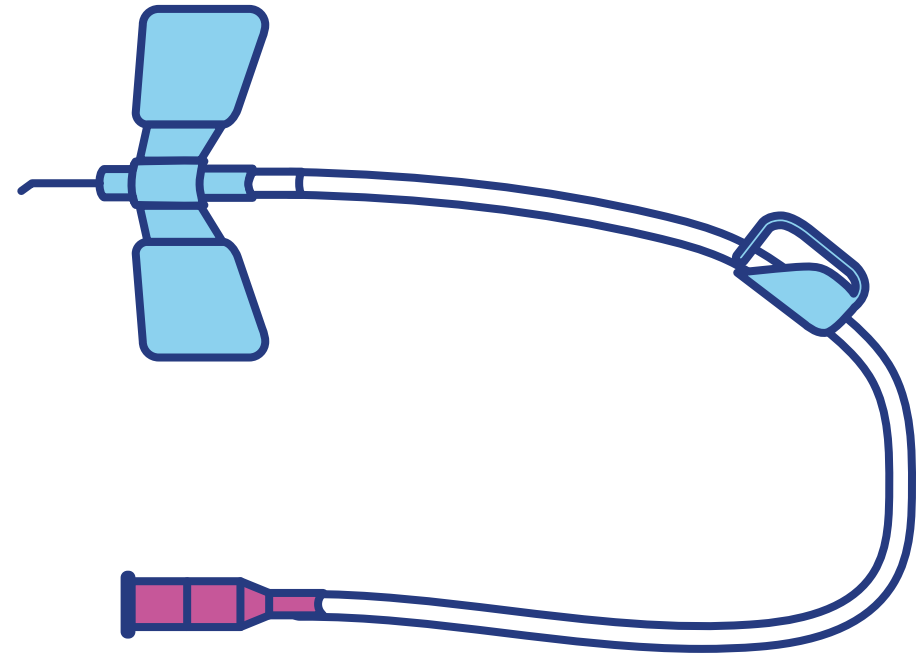
Your nurse will change her gloves into special clean gloves to keep germs away from your port.

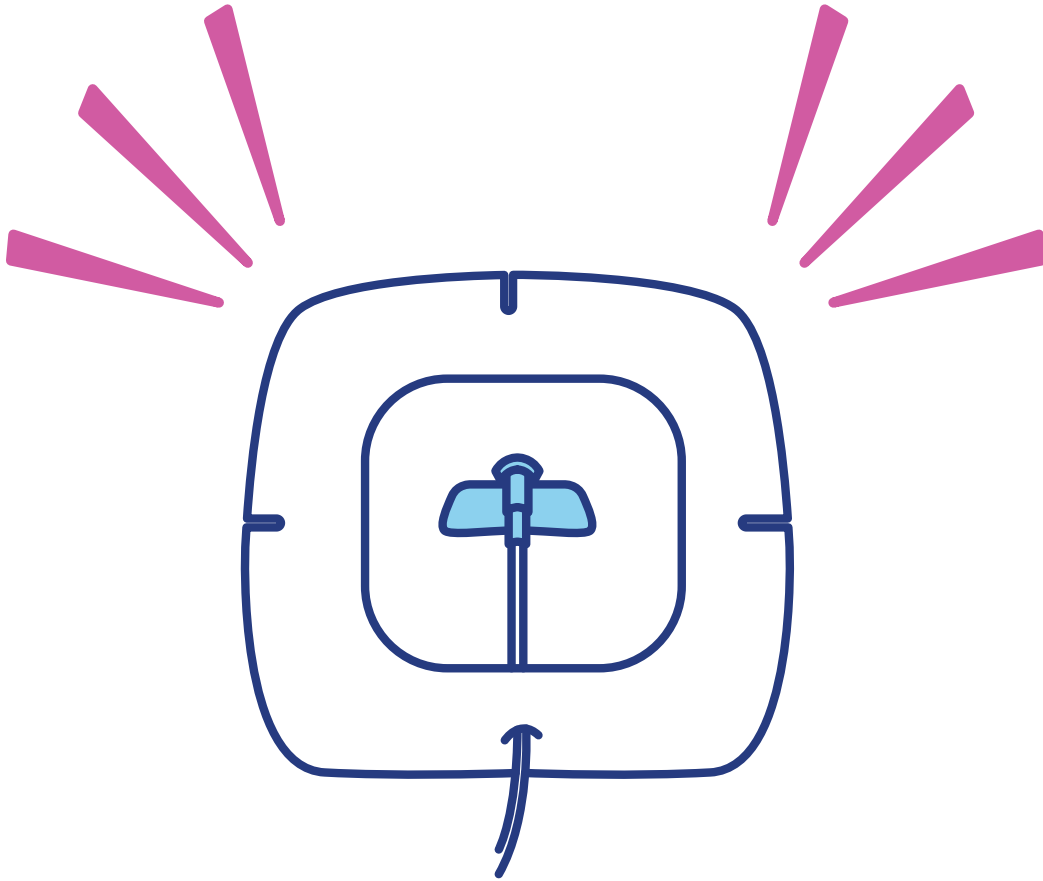
After, your nurse will use a small circle sponge to clean your skin on top of the port. The sponge may feel cold and wet.

Next, your nurse will wait until your skin is dry.

Then, your nurse will feel your port with her fingers. You may feel a little pressure.

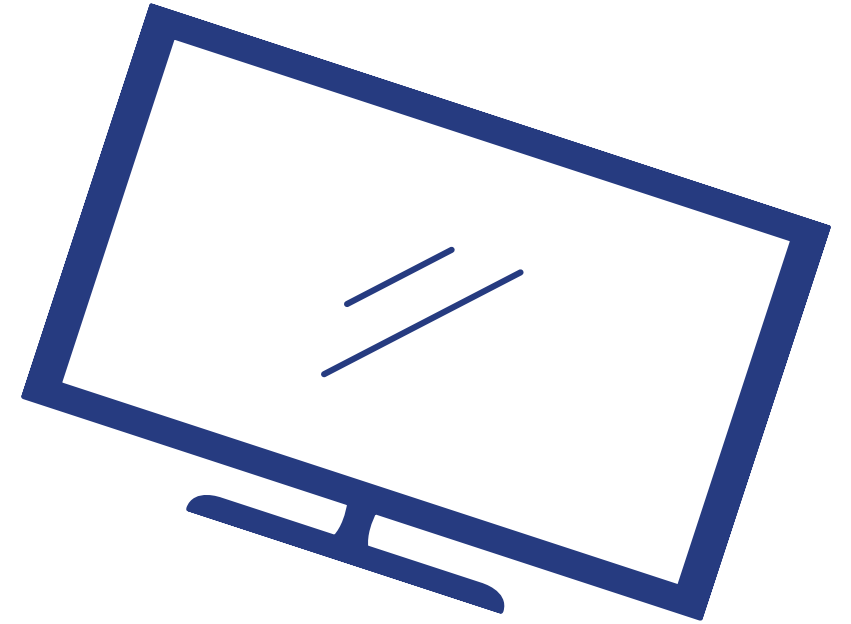
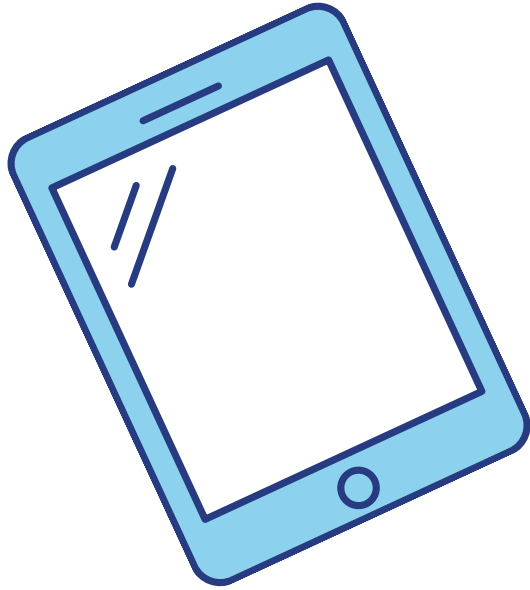
Next, your nurse will insert a small needle into the squishy part of your port. The numbing cream will help you only feel the needle a little bit.



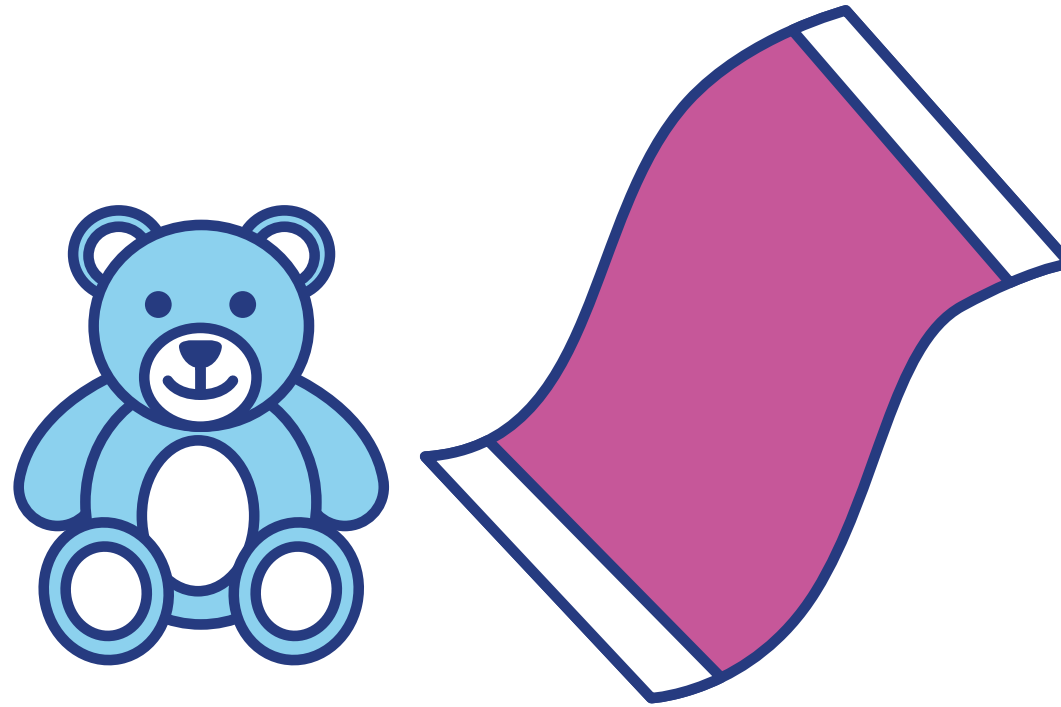


Lastly, your nurse will put a new clear sticker on top of your port to keep the needle safe.

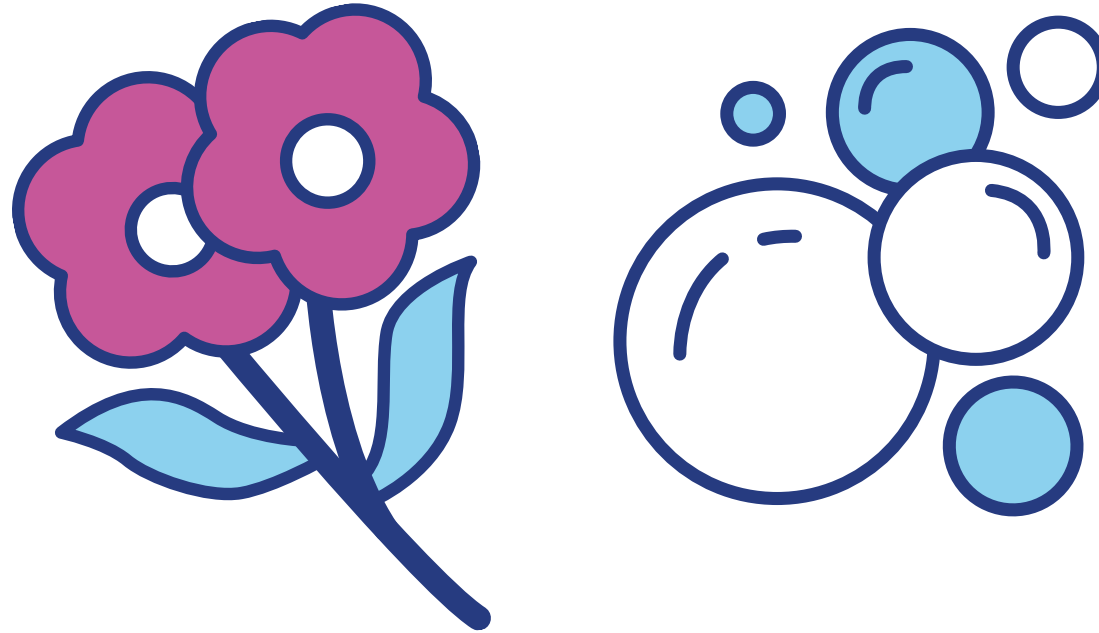
Everyone will be so proud that you stayed still for your port access!



During your port access, you can choose what you want to do. Some kids like to use an iPad, read a book, watch TV or use a stress ball. You can choose whether or not you want to watch the port access.



You can choose to sit with mom or dad during your port access. You might want to have a special stuffed animal or blanket with you.



Some kids like to take deep breaths by pretending to smell flowers with their nose and blowing out bubbles with their mouth. This helps make your body feel calm.